

# accessories reverse

---

*Installation*



---

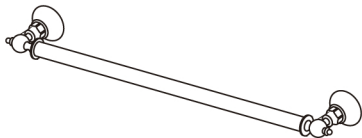
FRANZ  
VIEGENER

---

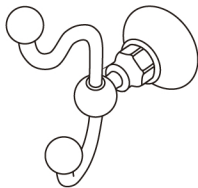
---

## Accessories Revere Line

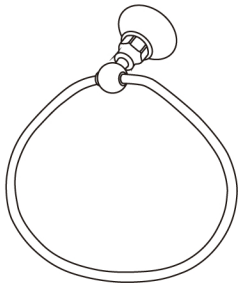
---



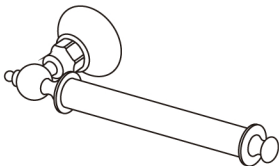
*Towel bar*  
*FV164/58 (17 11/16")*  
*FV164.01/58 (23 5/8")*  
*FV164.02/58 (29 1/2")*



*Robe hook*  
*FV166/58*



*Towel ring*  
*FV162/58*



*Toilet roll holder*  
*FV167/58*

## Installation instructions



1\_Using the support (in the position the figure shows), mark the place where you will drill the first hole to mount the accessory.



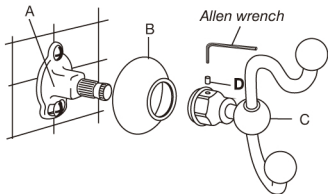
2\_Make the necessary hole for No 6 plastic anchor and then put the plastic anchor.

No 6 Plastic anchor

No 6 Screw



3\_Affix the support to the wall using the screws and the plastic anchors provided. Repeat the procedure (1 and 2) to complete the fixation of the support.



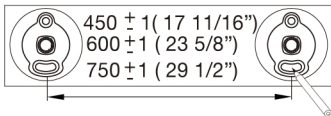
4\_Slide the escutcheon (B) and the main part (C) over the support (A) until it bottom against the wall. Tighten the set-screw (D) with the Allen wrench provided.

---

# Accessories with two supports

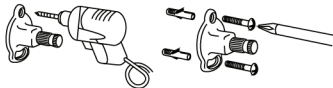
---

## Assembling

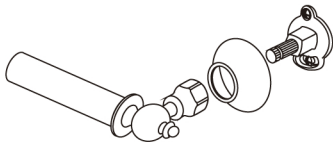


For accessories such as towel bars, please bear in mind the following:

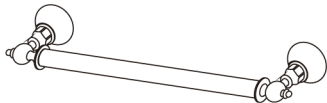
a\_Using the template attached to the towel bar, mark the places where you will drill. Take care to verify horizontals.



b\_Follow previous instructions (1, 2 and 3) for affixing the supports.



c\_Put the complete set together, without escutcheon. Tighten the supports (see picture).



d\_Put set together with the escutcheons.