

Specification Sheets for 34½" Tall Montlake Vanities, Linen Lowers & Uppers & Knee Drawers.

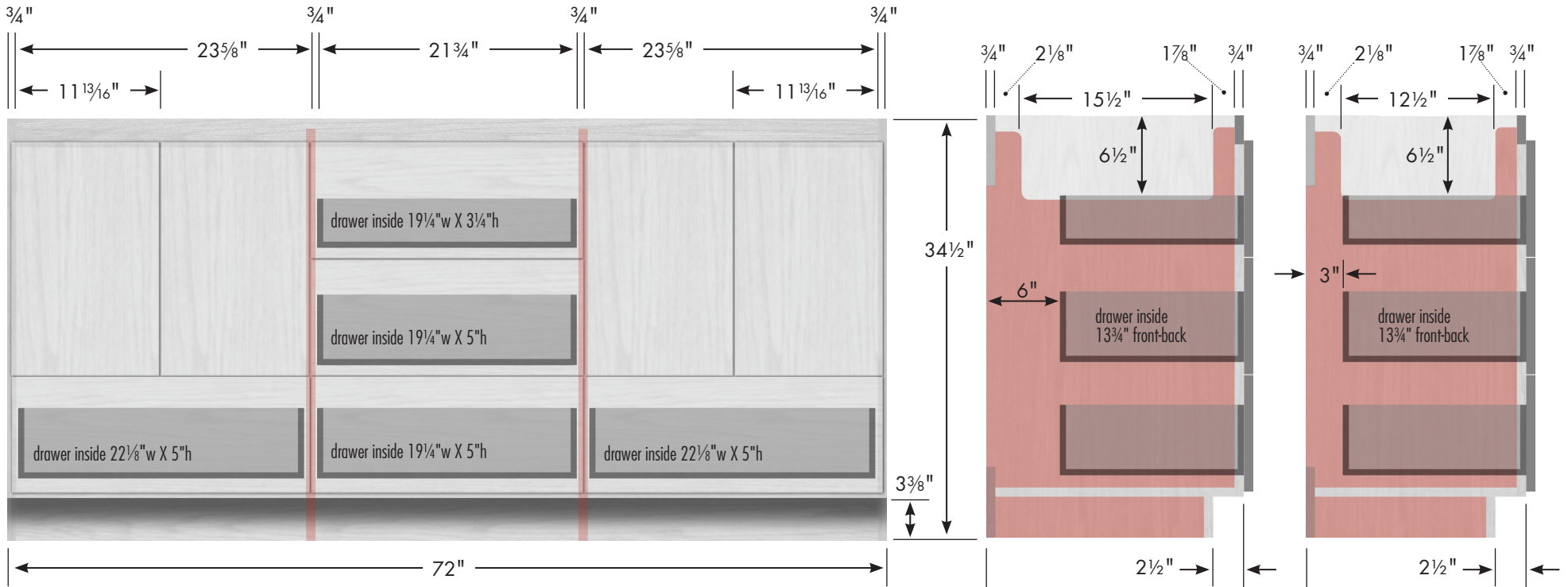
SPECIFICATION VARIANCES

Dimensions on finished vanities may vary slightly from those shown on these specification sheets due to variability in construction materials.

Our products are engineered to maintain close dimensional tolerances but variability in manufacturing materials can change dimensions slightly (normally within $\pm 1/8"$ but occasionally up to $\pm 3/16"$).

In most applications these slight variations will have no impact upon installation, appearance or function. However, when planning and finishing a space for a built in vanity, **do not frame or finish the space before measuring the actual cabinet!**

We can not be responsible for any expenses incurred as a result of the end user or contractor not following this guideline.



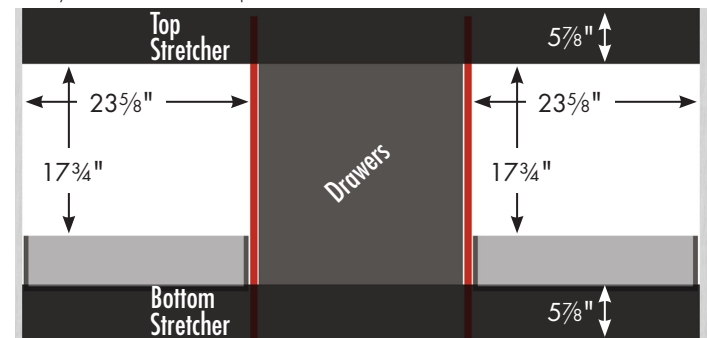
Adjustable/removable shelf under basins behind doors

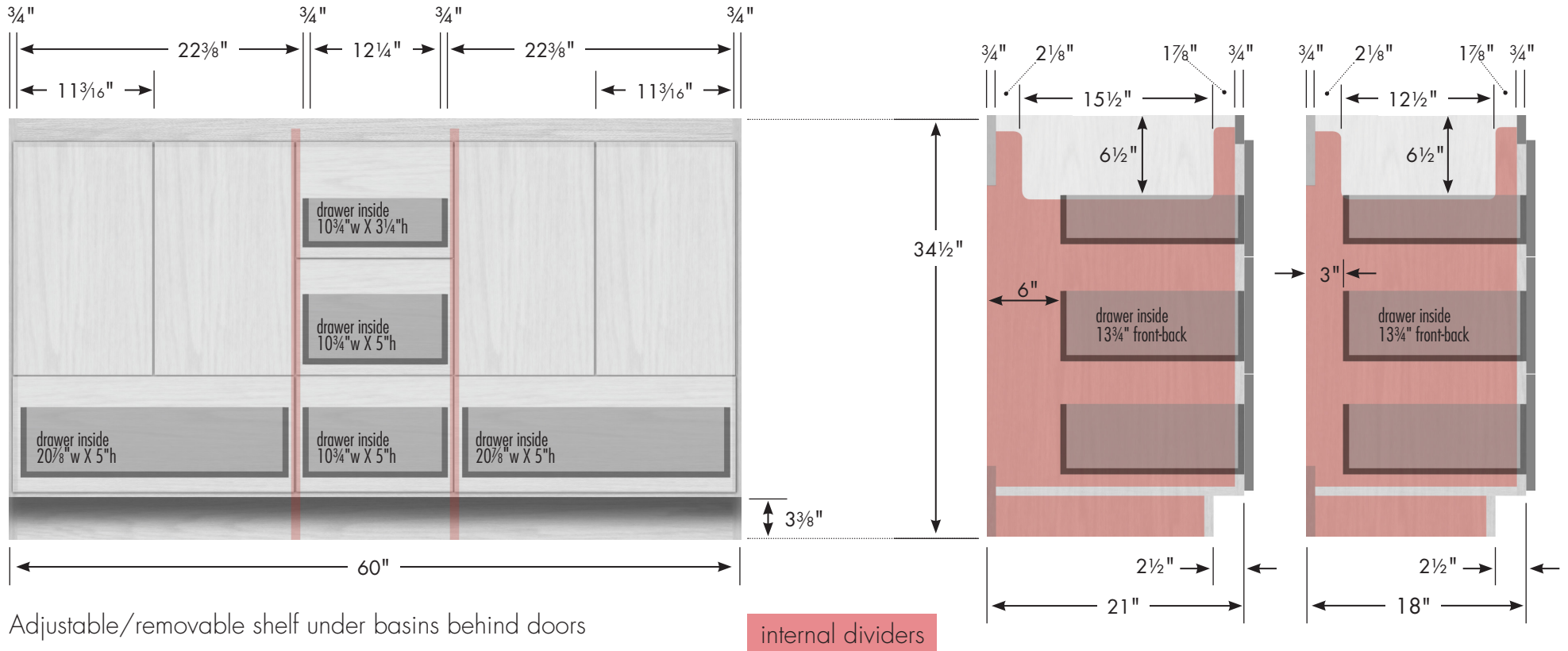
internal dividers

Vanity back clear openings for plumbing
(may need to cut adjustable shelf)

72" Montlake Vanity

72" wide
34½" tall
21" or 18" front-to-back

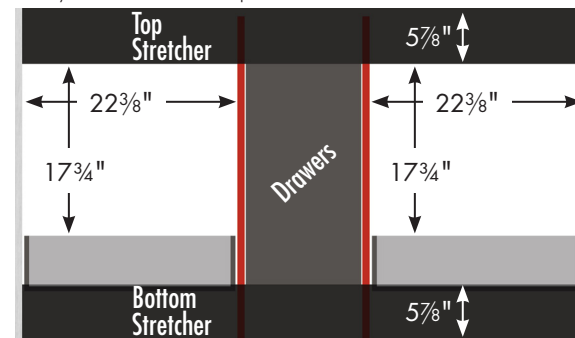


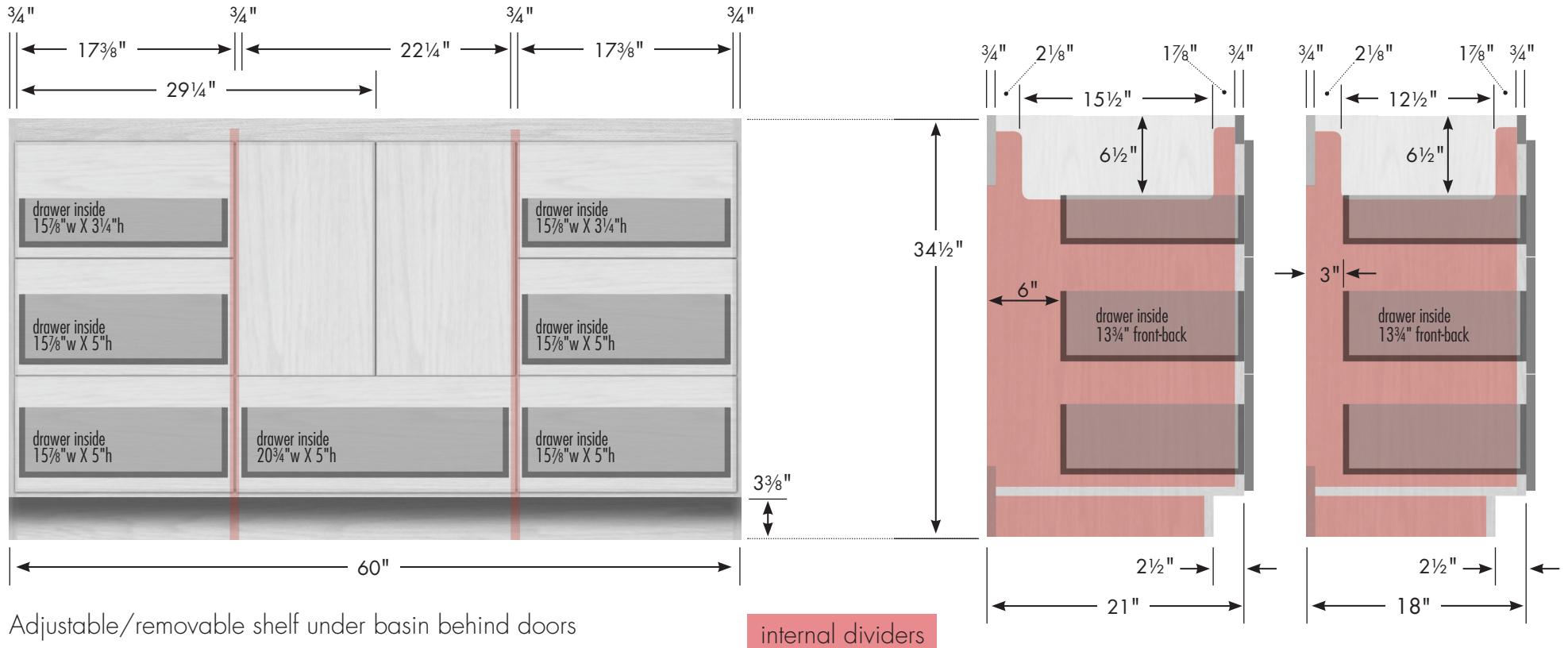


60" Montlake Vanity
Double Basin
 60" wide
 34½" tall
 21" or 18" front-to-back



Vanity back clear openings for plumbing
 (may need to cut adjustable shelf)

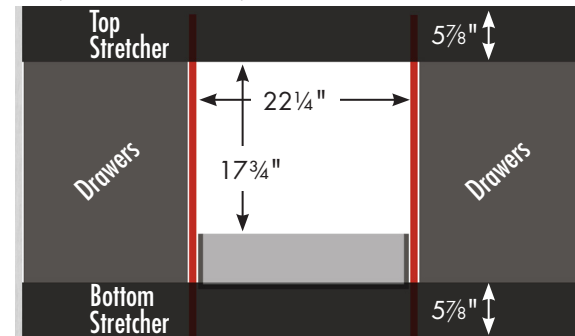


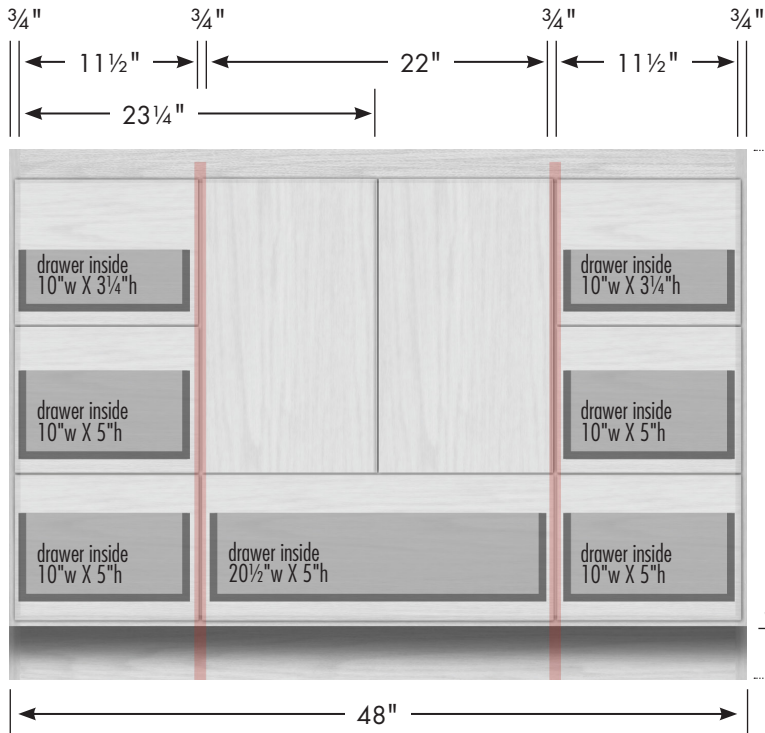


**60" Montlake Vanity
Center Basin**
60" wide
34½" tall
21" or 18" front-to-back



Vanity back clear openings for plumbing
(may need to cut adjustable shelf)

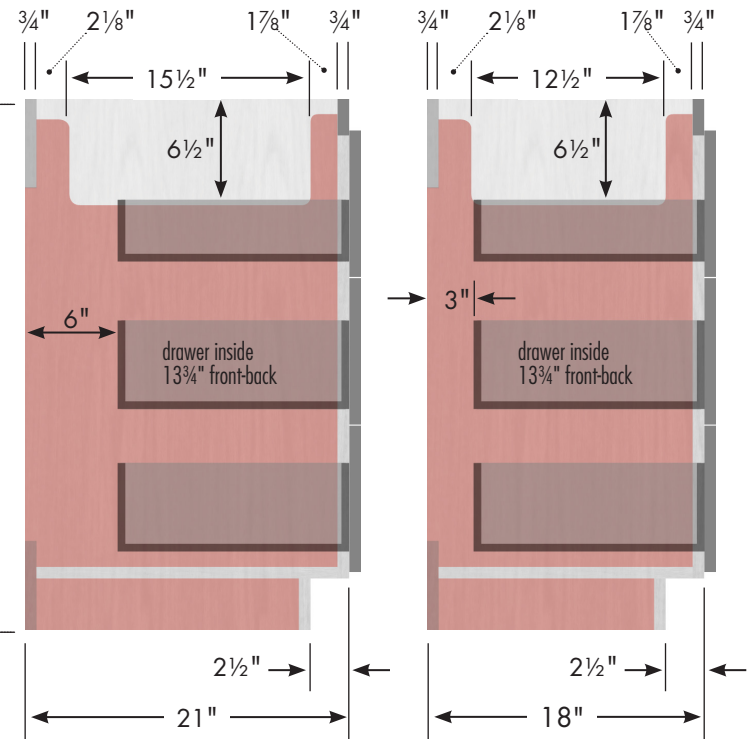




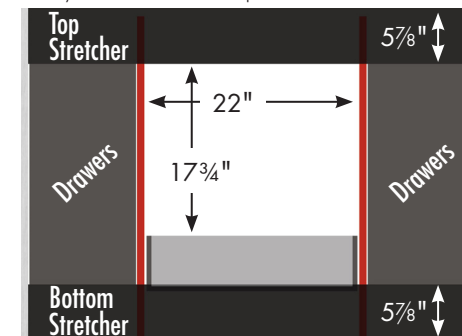
Adjustable/removable shelf under basin behind doors



internal dividers



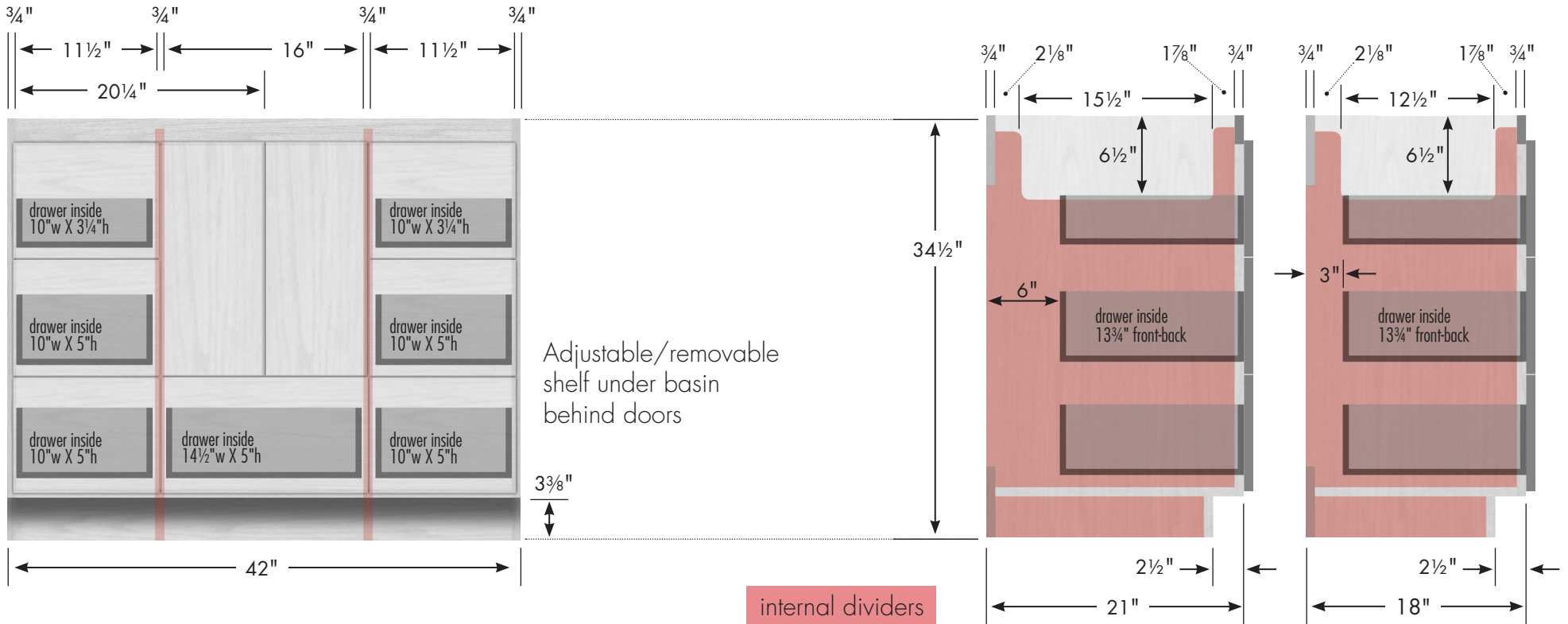
Vanity back clear openings for plumbing
(may need to cut adjustable shelf)



48" Montlake Vanity

48" wide
34½" tall
21" or 18" front-to-back



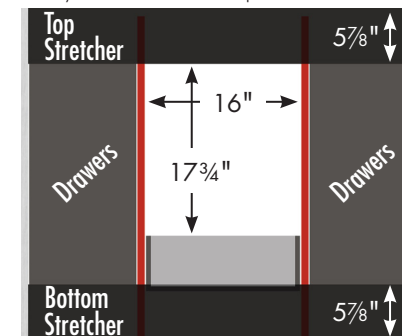


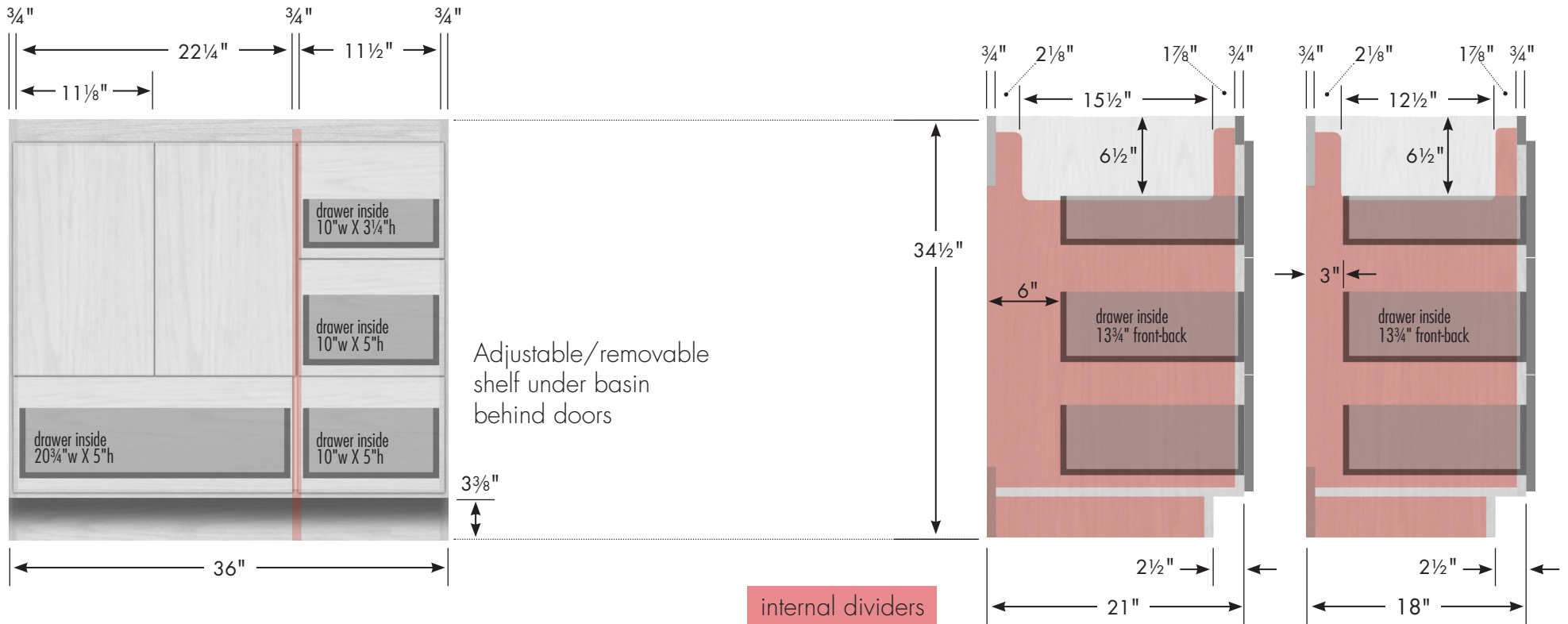
42" Montlake Vanity

42" wide
34½" tall
21" or 18" front-to-back



Vanity back clear openings for plumbing
(may need to cut adjustable shelf)

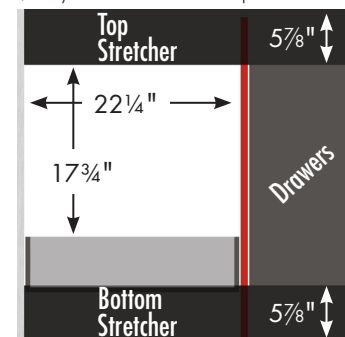


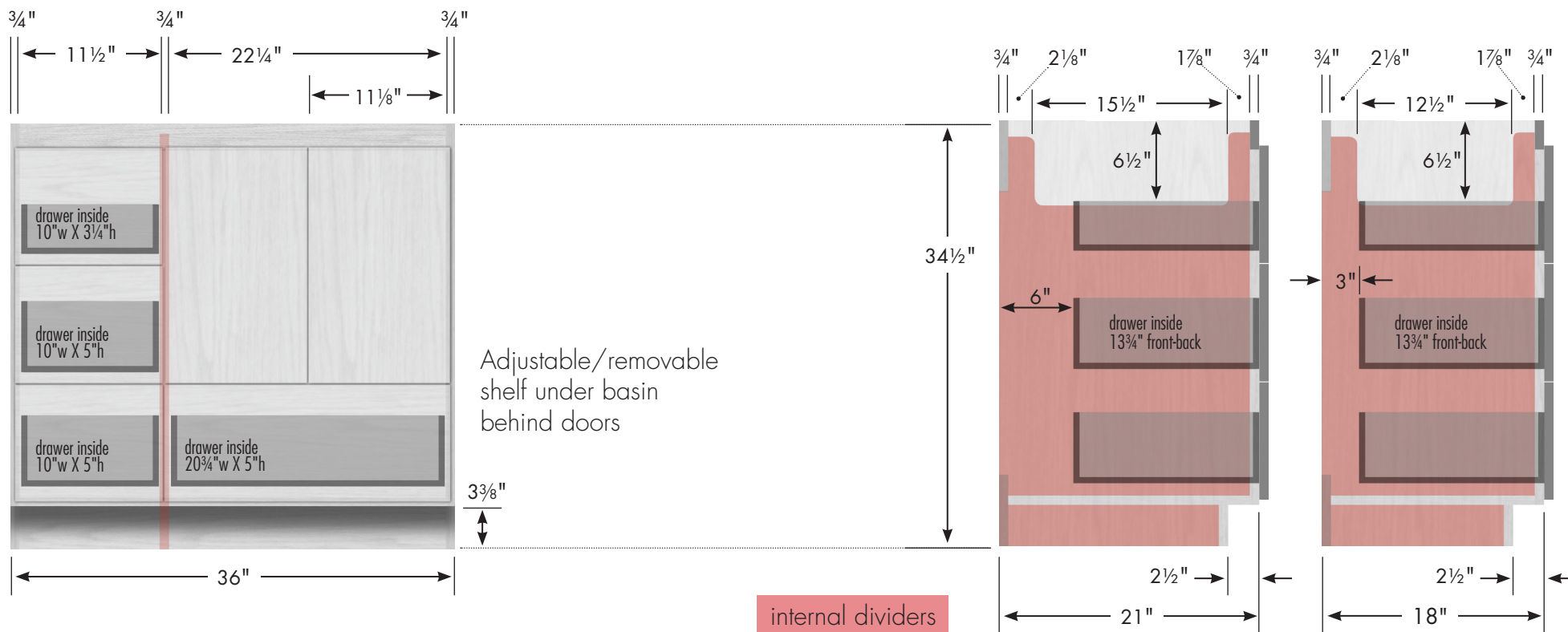


36" Montlake Vanity
Drawers Right
 36" wide
 34½" tall
 21" or 18" front-to-back

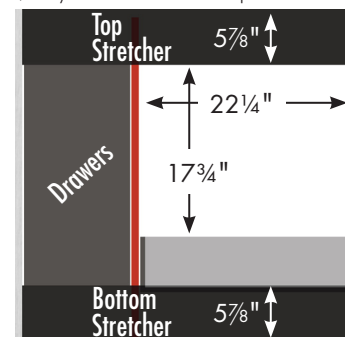


Vanity back clear openings for plumbing
 (may need to cut adjustable shelf)





Vanity back clear openings for plumbing
 (may need to cut adjustable shelf)



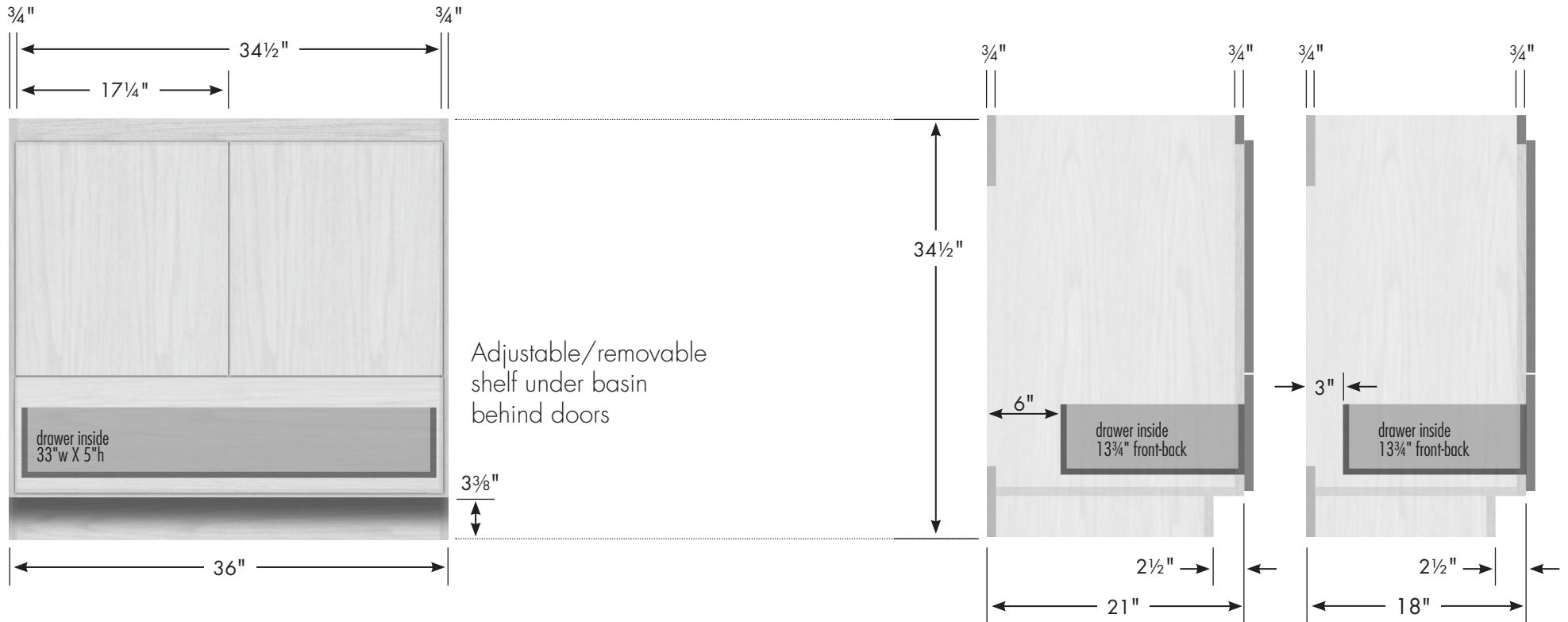
36" Montlake Vanity
Drawers Left
 36" wide
 34½" tall
 21" or 18" front-to-back



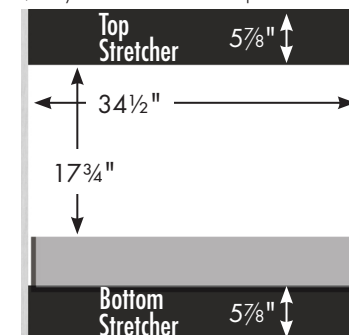
STRASSER

woodenworks

34½" tall Montlake Vanity
36" wide, no side drawers

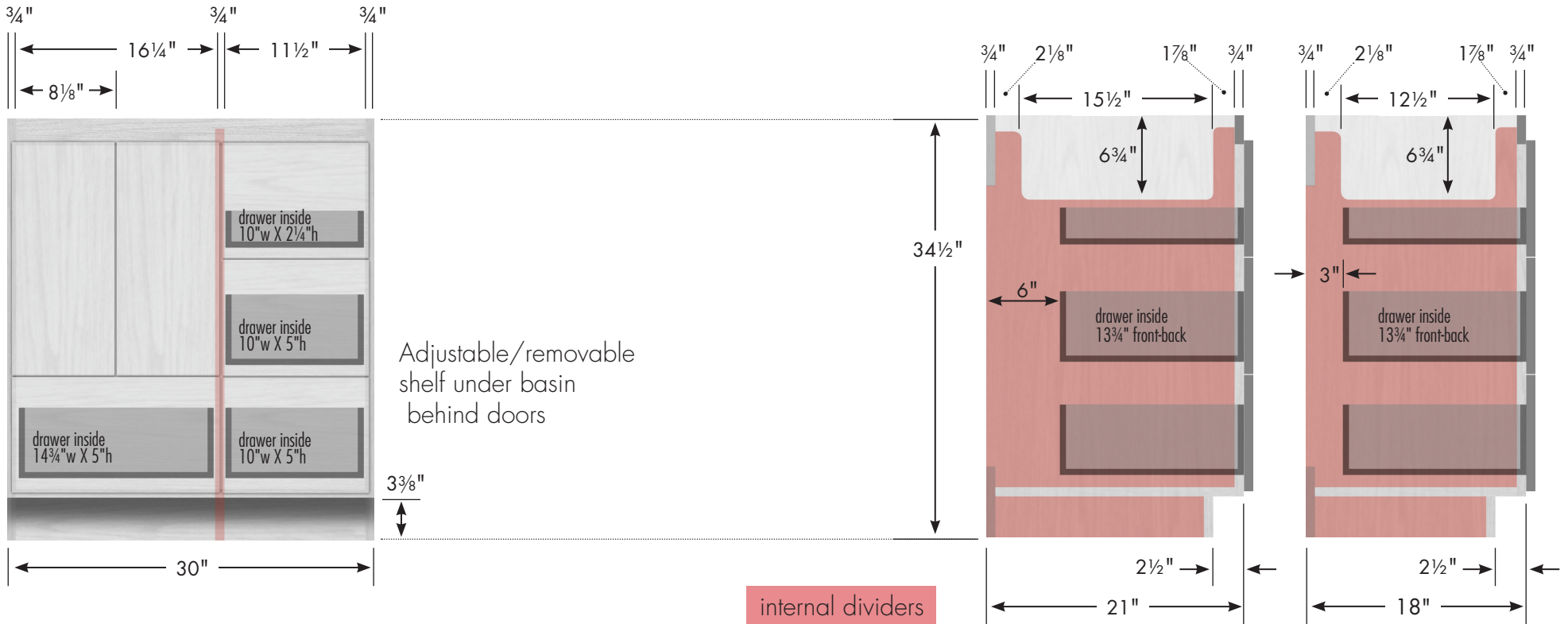


Vanity back clear openings for plumbing
 (may need to cut adjustable shelf)



36" Montlake Vanity
No Side Drawers
 36" wide
 34½" tall
 21" or 18" front-to-back

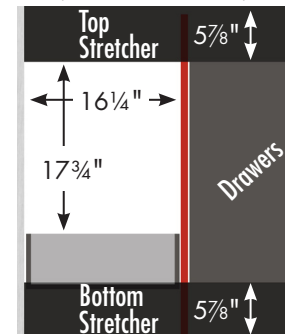


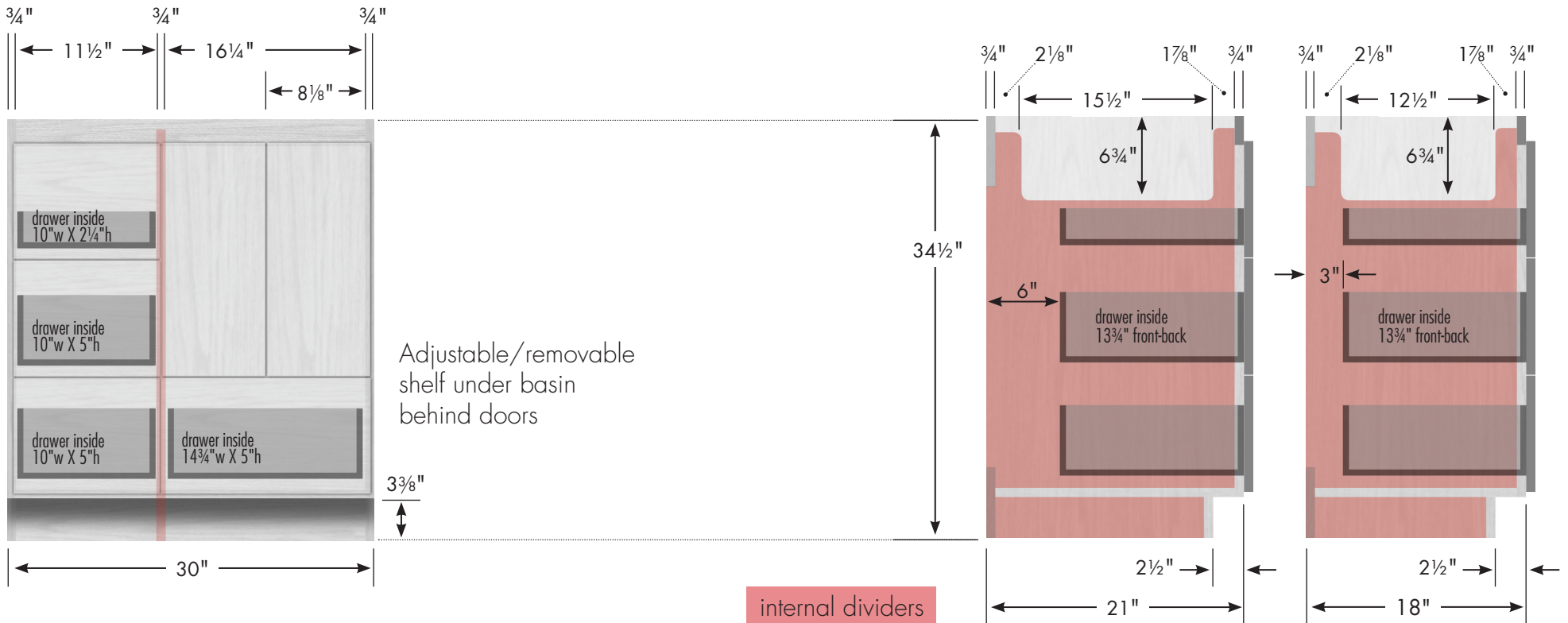


30" Montlake Vanity
Drawers Right
 30" wide
 34½" tall
 21" or 18" front-to-back



Vanity back clear openings for plumbing
 (may need to cut adjustable shelf)

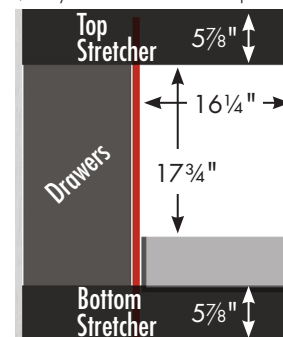


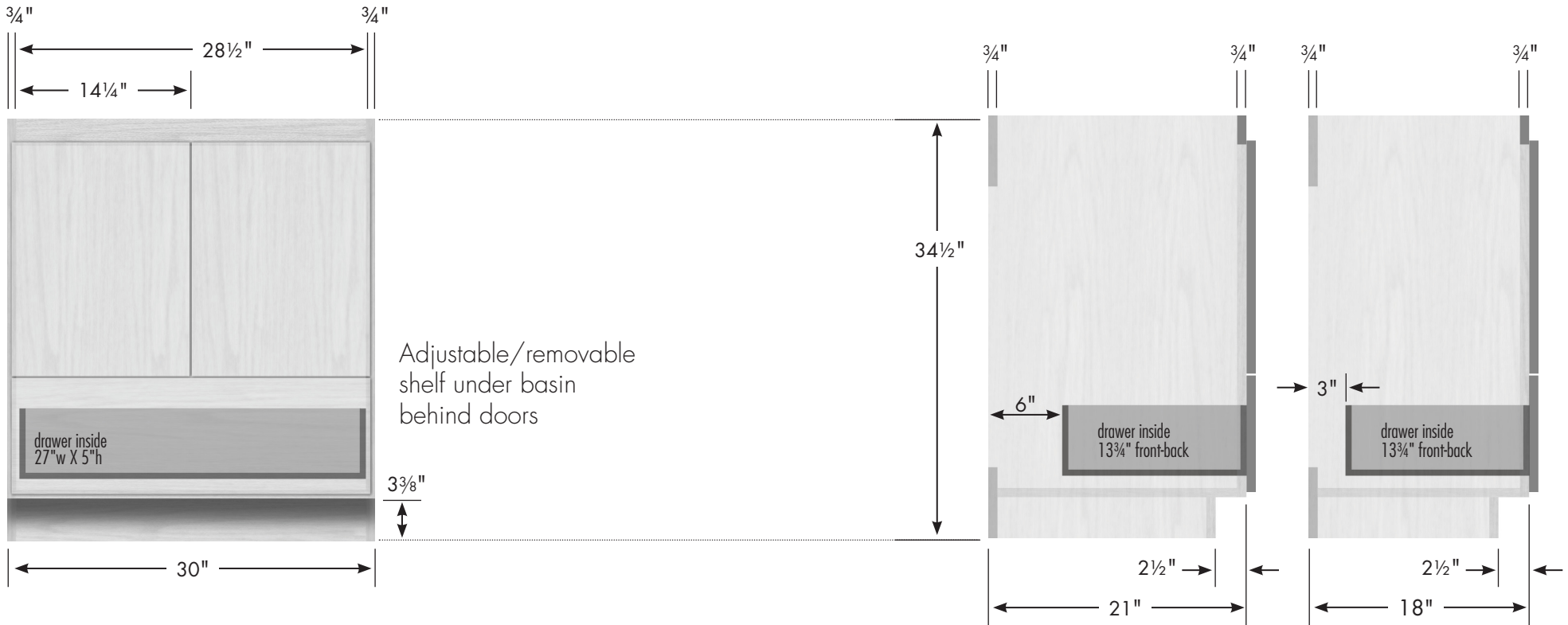


**30" Montlake Vanity
Drawers Left**
30" wide
34½" tall
21" or 18" front-to-back

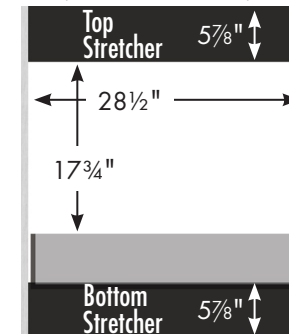


Vanity back clear openings for plumbing
(may need to cut adjustable shelf)



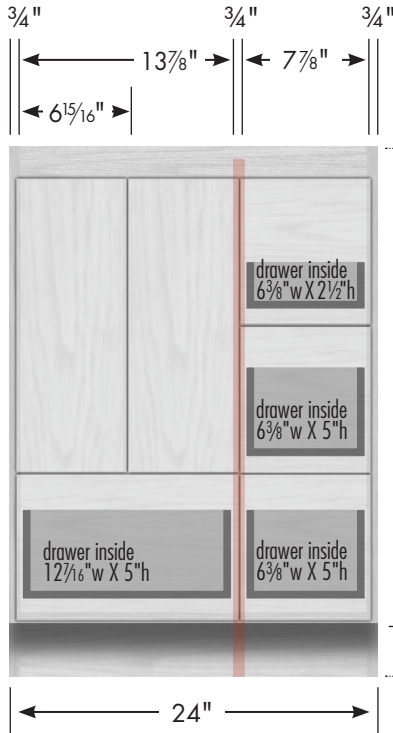


Vanity back clear openings for plumbing
(may need to cut adjustable shelf)

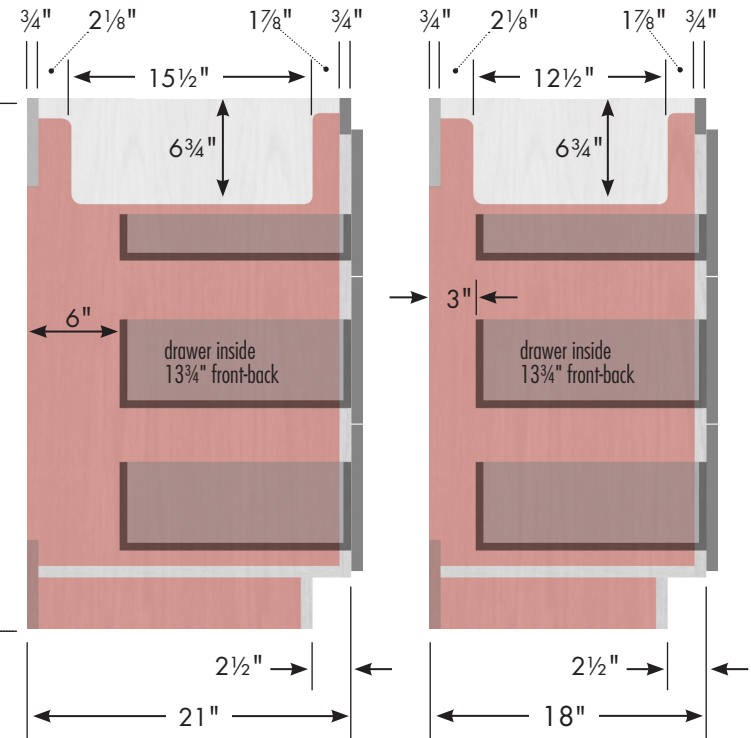


30" Montlake Vanity
No Side Drawers
30" wide
34½" tall
21" or 18" front-to-back



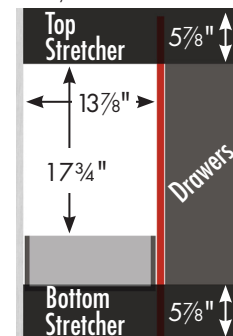


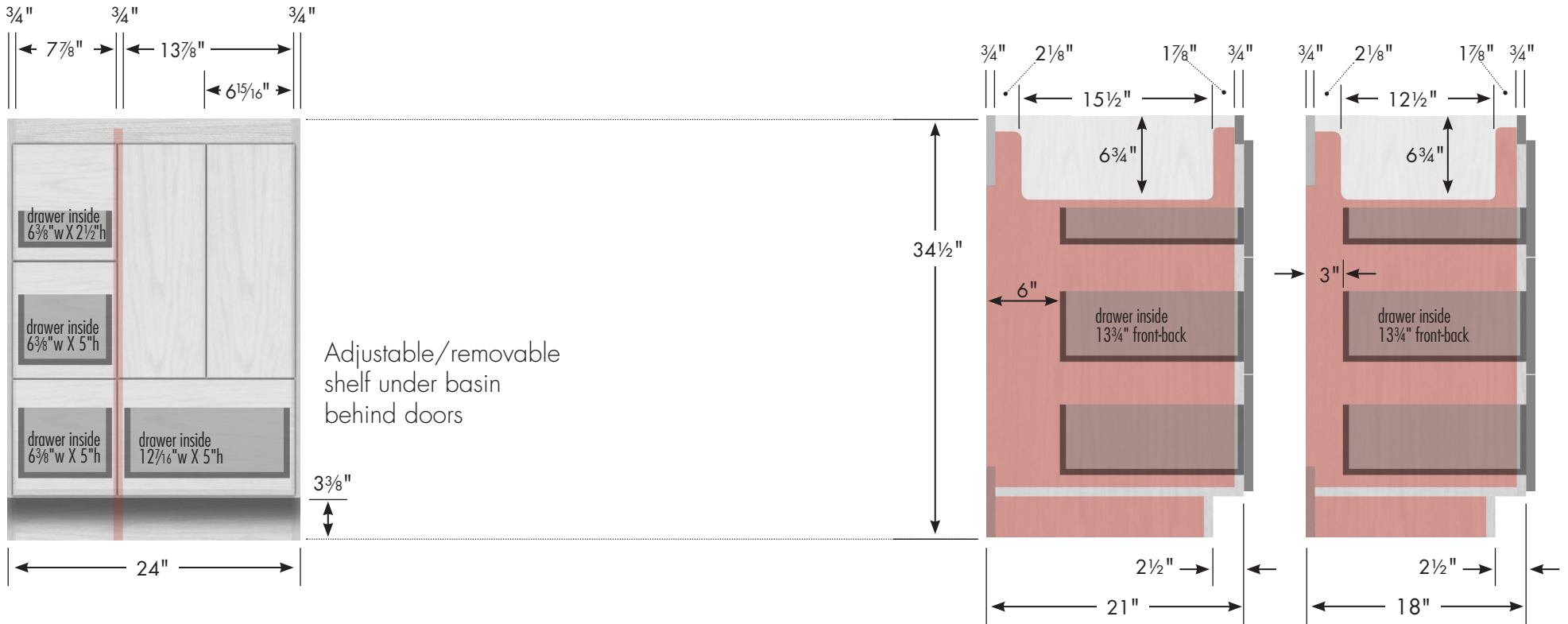
Adjustable/removable shelf under basin behind doors



Vanity back clear openings for plumbing (may need to cut adjustable shelf)

24" Montlake Vanity
Drawers Right
 24" wide
 34½" tall
 21" or 18" front-to-back

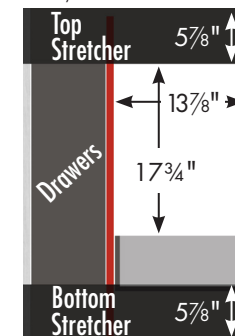




**24" Montlake Vanity
Drawers Left**
24" wide
34½" tall
21" or 18" front-to-back



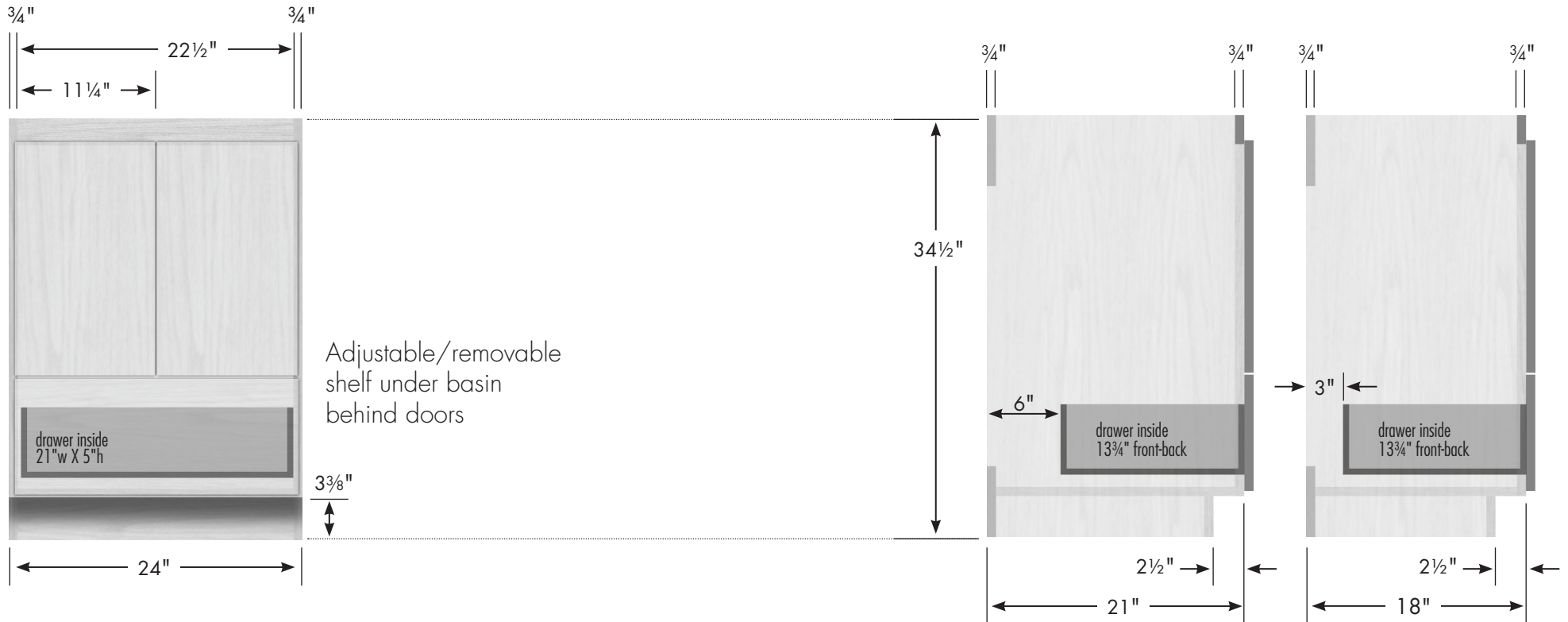
Vanity back clear openings for plumbing
(may need to cut adjustable shelf)



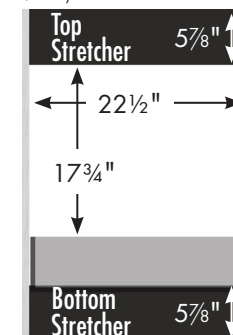
STRASSER

woodenworks

34½" tall Montlake Vanity/Linen Lower 24" wide, no side drawers



Vanity back clear openings for plumbing
(may need to cut adjustable shelf)



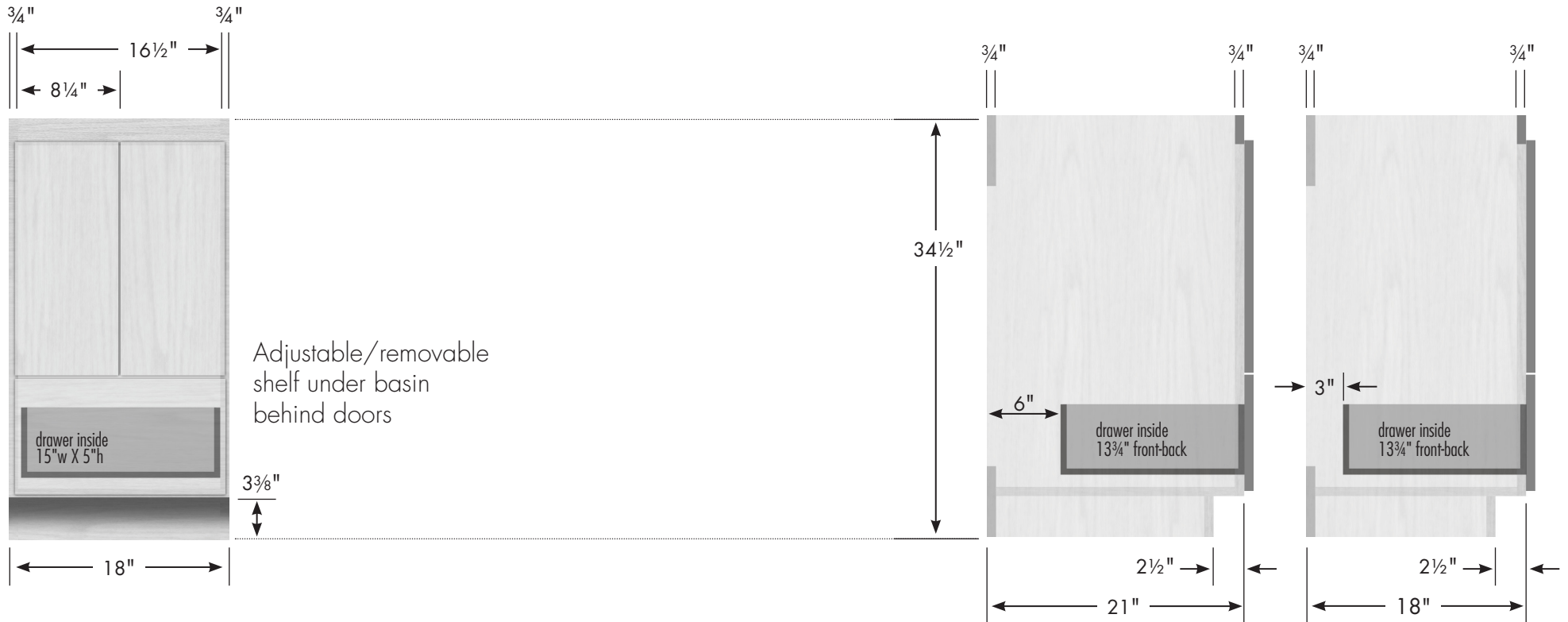
**24" Montlake Vanity/
Linen Lower
No Side Drawers**
24" wide
34½" tall
21" or 18" front-to-back



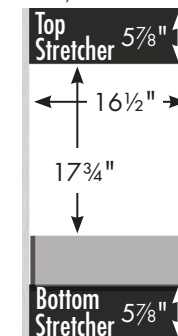
STRASSER

woodenworks

34½" tall Montlake Vanity/Linen Lower 18" wide, no side drawers

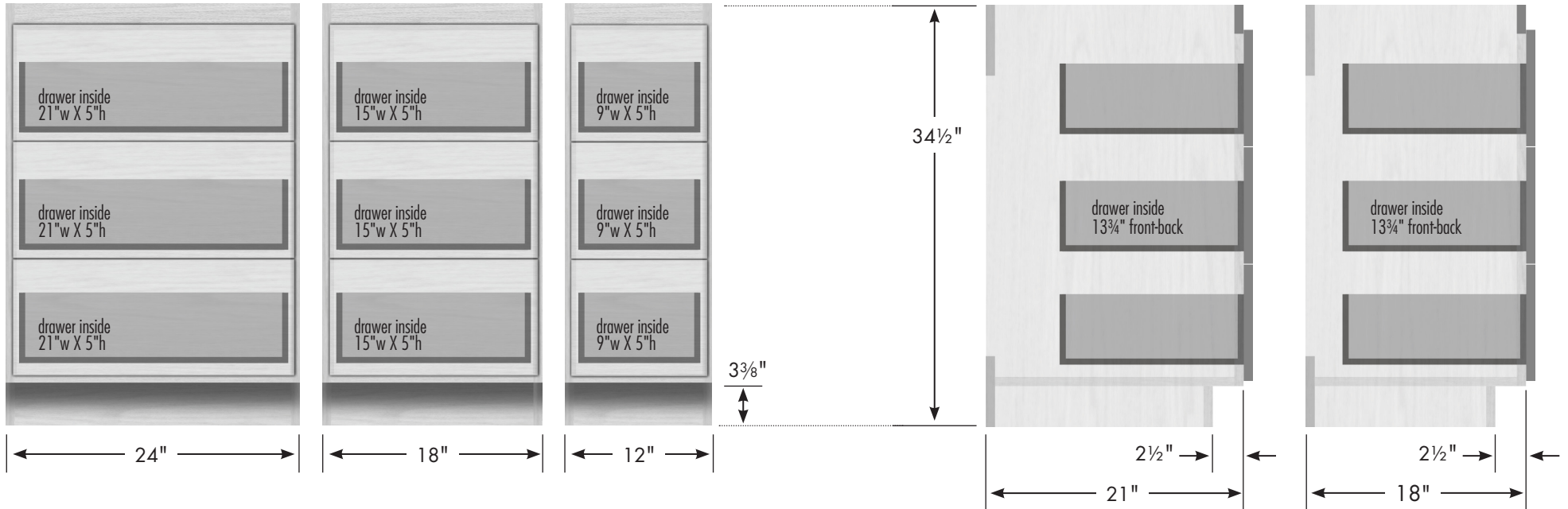


Vanity back clear openings for plumbing
(may need to cut adjustable shelf)



**18" Montlake Vanity/
Linen Lower
No Side Drawers**
18" wide
34½" tall
21" or 18" front-to-back

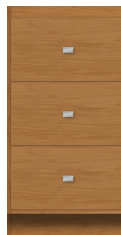




**24" Montlake
Drawer Bank/
Linen Lower**
24" wide
34½" tall
21" or 18" front-to-back



**18" Montlake
Drawer Bank/
Linen Lower**
18" wide
34½" tall
21" or 18" front-to-back



**12" Montlake
Drawer Bank**
12" wide
34½" tall
21" or 18" front-to-back





24" Montlake Linen Upper
 24" wide
 48" tall
 21" or 18" front-to-back
 optional crown adds 1" to height



18" Montlake Linen Upper
 18" wide
 48" tall
 21" or 18" front-to-back
 optional crown adds 1" to height



18

SPECIAL NOTE

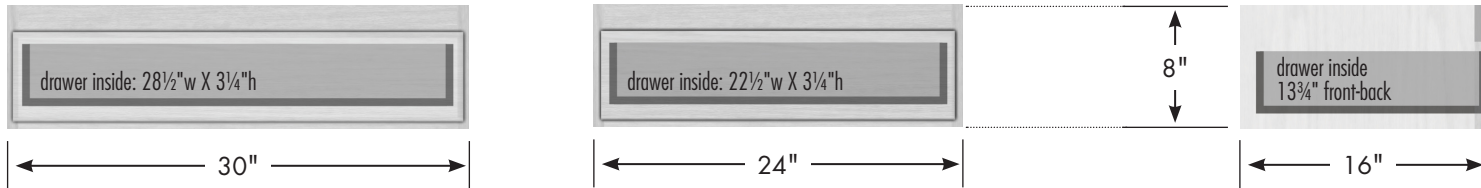
Serious or fatal crushing injuries can occur from a linen cabinet tipping over.

To help prevent tipover:

- Install provided tipover restraint
- Place heaviest items in the lower drawers
- Do not place heavy objects on top of this product
- Never allow children to climb or hang on drawers, doors or shelves
- Do not open more than one drawer at a time.

Use of tipover restraints may only reduce, but not eliminate, the risk of tipover.

We supply attachment hardware with your order but some applications may need different/additional hardware. Manufacturer assumes no liability for improper installation or excessive loads placed on screws, brackets or straps.



**30" Montlake
Knee Drawer**
30" wide,
8" tall
16" front-to-back



**24" Montlake
Knee Drawer**
24" wide,
8" tall
16" front-to-back

